

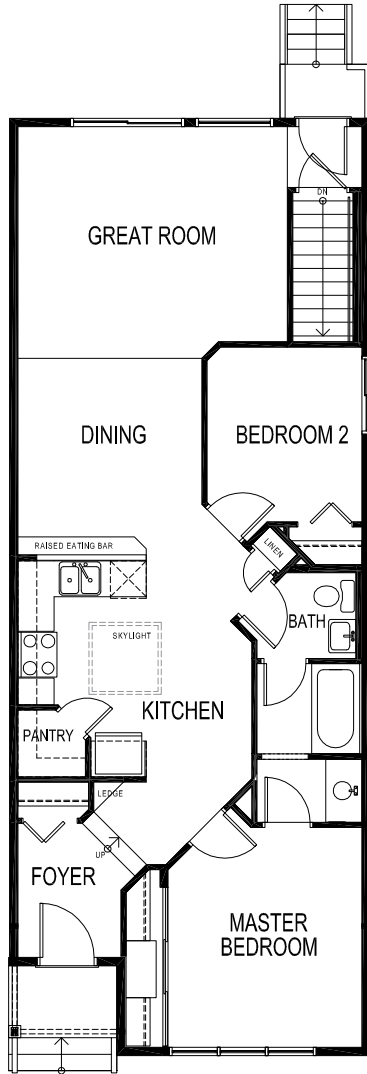
The Torrisdale



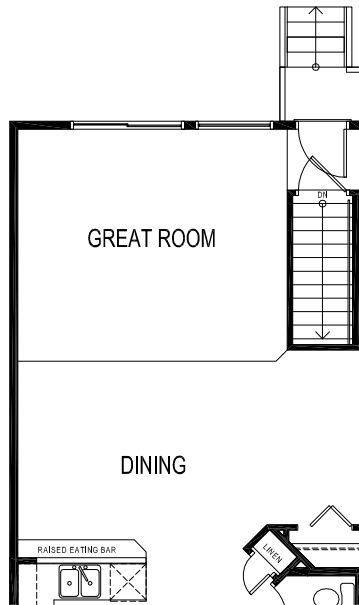
- Vaulted main floor ceiling
- Spacious great room
- Raised eating bar and skylight
- Excellent optional lower development
- Bright kitchen and corner pantry

1010 - 1027 sq. ft.

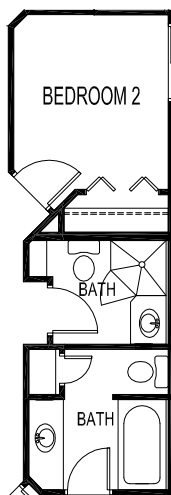
Note: Square footages and front windows vary with elevation



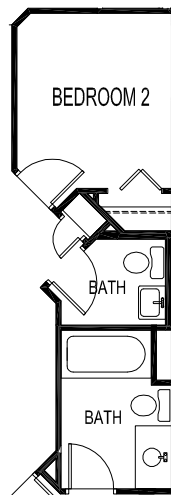
MAIN FLOOR
1010-1027 sq. ft



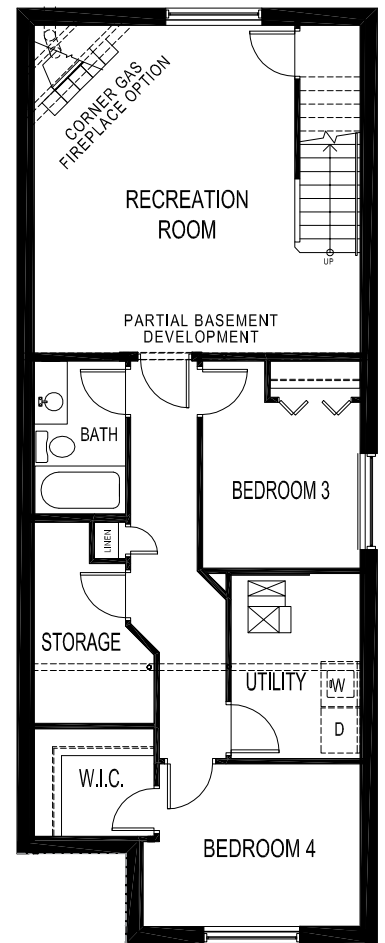
MAIN FLOOR
ONE BEDROOM OPTION



EXPANDED
2 BATH OPTION



BATH
ENSUITE OPTION



BASEMENT
FULL DEVELOPMENT OPTION
Partial 318 sq. ft.
Full 733-746 sq.ft.

LAST REVISED: Sept. 9/09



NEW BRIGHTON

The Torrisdale

THE
LEGACY
SERIES



NB 1



NB 2