

The Belvedere

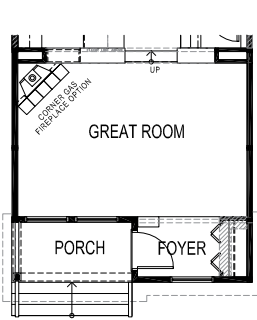


Distinctive bridge separates bedrooms and allows overlook view of the kitchen and elegant curved staircase

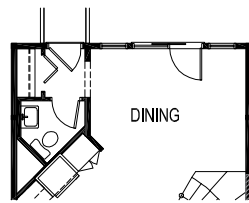
- 9 ft ceilings in great room
- Raised kitchen and dining area
- Rear mud room

1449 - 1541 sq. ft.

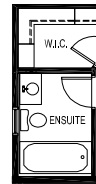
Note: Square footages and front windows vary with elevation



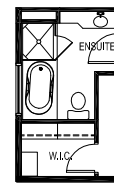
**MAIN - CORNER GAS
FIREPLACE OPTION**



**MAIN -
GARDEN DOOR OPTION**

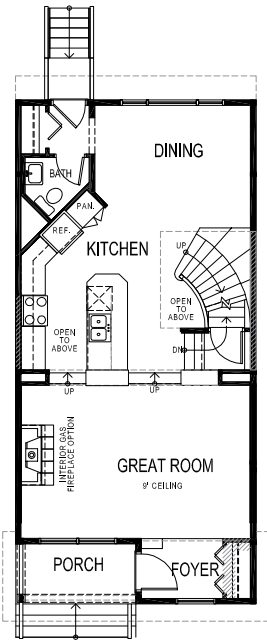


**SIX FOOT TUB
OPTION**

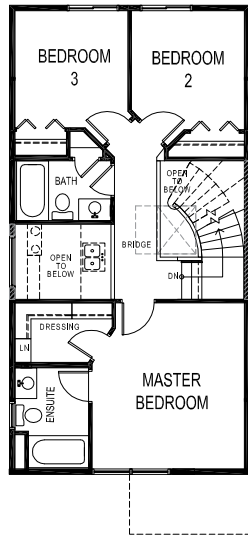


**4 PIECE ENSUITE
OPTION**

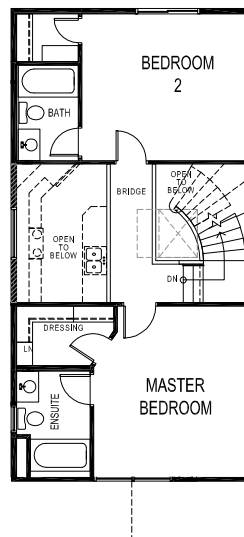
**UPPER -
MASTER ENSUITE OPTIONS**



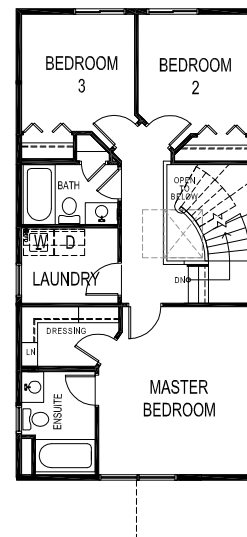
**MAIN
790 sq. ft.**



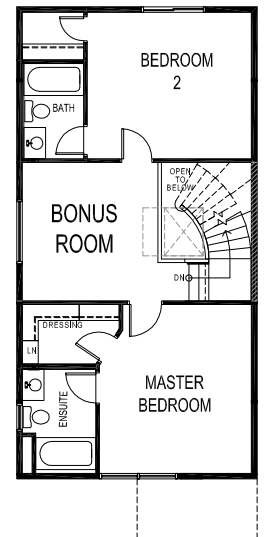
**STANDARD UPPER -
3 BEDROOM
702 sq. ft.**



**UPPER - 2 MASTER
BEDROOM OPTION
659 sq. ft.**



**UPPER - 3 BEDROOM w/
UPPER FLOOR LAUNDRY
751 sq. ft.**



**UPPER - 2 BEDROOM w/
BONUS ROOM
751 sq. ft.**

LAST REVISED: Sept. 9/09



The Belvedere

THE
LEGACY
SERIES



AB 1



AB 2



AB 3



AB 4